

Everything's Possible

Xerox® PrimeLink® C9265/C9275/C9281 Printer.



It's Time to Embrace Agility

When requests change by the minute, you need a printer that makes everything possible – luxury output, countless options for office and production-level feeding and finishing, with speedy, effortless workflows that help work get done faster. That's the all-new Xerox® PrimeLink® C9200 Printer Series.

NOW, ANYONE CAN PRINT LIKE A PRO

You'll do more with Xerox® PrimeLink® – a new light production engine that delivers more power with print speeds of up to 81 prints per minute. Whether you run an office, agency, university or print production shop, Xerox® PrimeLink® is ready to enhance your image with seamless support and the broadest range of capabilities in the light production market.

LUXURY OUTPUT QUALITY

Image quality beyond what you'd expect from an office printer, with high-definition, highly engaging colour output. Plus:

Crisp, rich black text and pristine, full-gamut colour graphics with High Definition Emulsion Aggregate (HD EA) Toner

Optimised 0.5 mm front-to-back registration to keep all your content exactly where you want it

More stable and accurate quality with new energy-efficient LED print technology, providing 2400 x 2400 dpi imaging

Accurate density and colour quality with advanced Simple Image Quality Adjustment (SIQA)

Support for expanded Extra-long Sheet (XLS) printing at greater sizes (1,300 mm)

Reliable envelope feeding in a wide array of sizes comes standard – no special kit required



WIDE RANGE OF FEEDING AND FINISHING

Effortless production of any run – small to large – with inline finishing on virtually any media ensures you're set up for success.

- **Offer more applications** with greater media flexibility, up to 400 gsm, and sizes up to 1,300 mm
- **Optimise your printer for every job** with Custom Stock Libraries
- **Get big capability and productivity** in a space-saving footprint

A PRINTER SO FUN TO USE, WORK WON'T FEEL LIKE WORK

When it comes to working better, it's all about efficiency and excellence. The new Integrated Colour Server for the Xerox® PrimeLink® C9200 Printer Series delivers that and more (standard) with ready-to-use workflows and advanced print features, accessed via a 10-inch touchscreen for tap-and-print/copy/scan convenience.

The Xerox® EX and EX-i C9200 Series Print Servers Powered by Fiery® (optional) offer production tools familiar to print shops and in-printers – including a wide range of Fiery® offerings for advanced colour management, job set-up and more.

SPEEDY, EFFORTLESS WORKFLOWS AND CUSTOMISATION

Time- and talent-saving automation with the potential to transform your workflows – and your working environment.

- **Accelerate your work** with Xerox® FreeFlow® Core and other FreeFlow® Workflow Software solutions
- **Monitor, measure and manage** your printer or entire fleet with Xerox® FreeFlow® Vision Software
- **Connect and create** with the Xerox® Connect App for XMPie for creative new applications, including preloaded templates for personalisation
- **Seamlessly print from any device** with support for mobile printing via the Xerox® @PrintByXerox App

SUPER-SECURE FROM TODAY'S – AND TOMORROW'S – THREATS

With dozens of security features and certifications, Xerox® PrimeLink® is ready to meet and exceed your organisation's protocols. Our multi-layered approach to security is designed around three principles to ensure ongoing protection and compliance – whatever your field or industry.



The All-new, From-the-ground-up Xerox® PrimeLink® C9200 Printer Series



Shown: Fiery® EX Print Server, Two-tray Oversized High Capacity Feeder, Xerox® PrimeLink® C9200 Printer Series, Xerox® Crease Two-sided Trimmer, Xerox® Production Ready Booklet Maker Finisher, Xerox® SquareFold® Trimmer



Speeds:
65/75/81 ppm



Media weights:
Up to 400 gsm



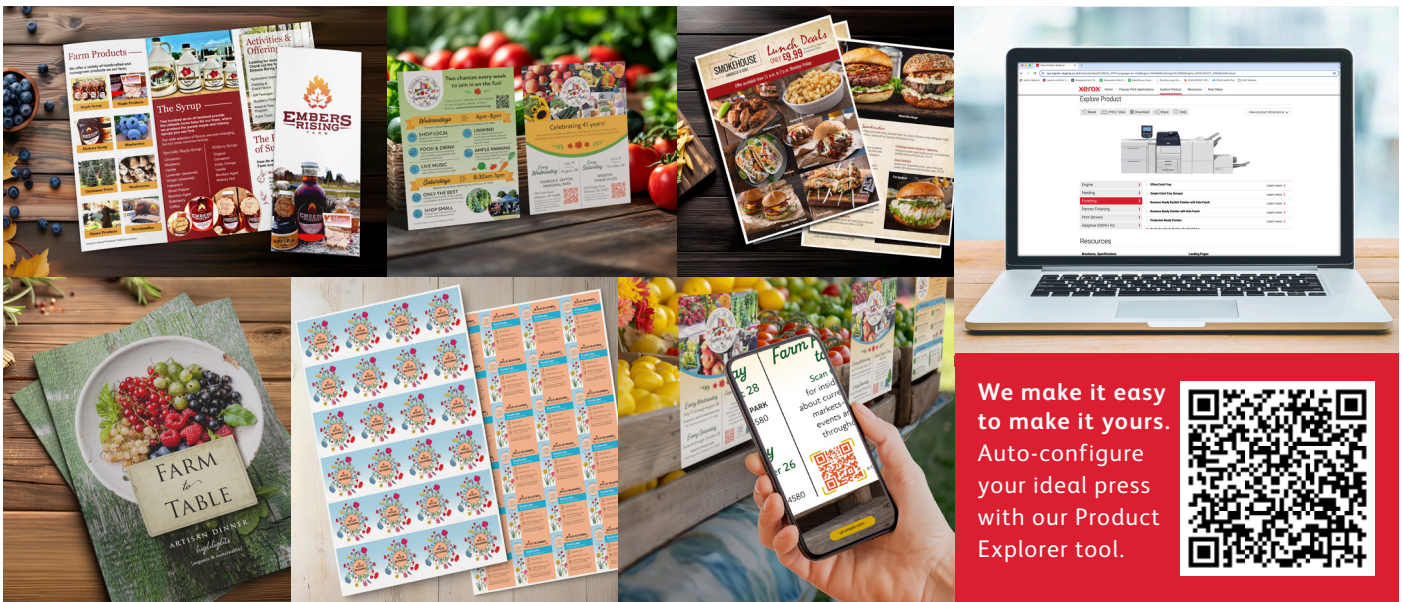
Banner media:
Up to 1,300 mm



Standard (5-tray) capacity:
3,500 sheets (with optional
One-tray Oversized High
Capacity Feeder [OHCF])
7,500 sheets
(with Two-tray OHCF)

- 1 Optional one- or two-tray Oversized High Capacity Feeders (OHCF)
- 2 Tray 5 (Multi-sheet Inserter (MSI)/Bypass tray)
- 3 Remote user interface
- 4 Smart proximity sensor
- 5 Dual-head colour scanner up to 270 ipm
- 6 Standard trays 1–5
- 7 Optional Xerox® EX or EX-i C9200 Series Print Servers Powered by Fiery®
- 8 Standard Integrated Colour Server for the Xerox® PrimeLink® C9200 Printer Series

- 9 High Definition Emulsion Aggregate (HD EA) toner
- 10 LED print technology
- 11 Intelligent/Advanced decurler
- 12 Registration: 0.5 mm front-to-back
- 13 Custom stock library
- 14 Redesigned paper path
- 15 Xerox® Crease Two-sided Trimmer
- 16 Xerox® SquareFold® Trimmer Multiple finishing options for production print and office environments



**We make it easy
to make it yours.**
Auto-configure
your ideal press
with our Product
Explorer tool.



Xerox® PrimeLink® C9265/C9275/C9281 Printers

DEVICE SPECIFICATIONS		PRIMELINK C9265		PRIMELINK C9275		PRIMELINK C9281	
SIMPLEX SPEEDS		Colour	Black and white	Colour	Black and white	Colour	Black and white
A4		Up to 65 ppm	Up to 65 ppm	Up to 75 ppm	Up to 75 ppm	Up to 81 ppm	Up to 81 ppm
A3		Up to 34 ppm	Up to 34 ppm	Up to 37 ppm	Up to 37 ppm	Up to 42 ppm	Up to 42 ppm
SRA3		Up to 30 ppm	Up to 30 ppm	Up to 34 ppm	Up to 34 ppm	Up to 38 ppm	Up to 38 ppm
Printer Dimensions		Height: 1,154 mm; Width: 1,575 mm; Depth: 793 mm (includes Bypass Tray and Offset Catch Tray)					
Monthly Duty Cycle		Up to 300,000 pages (maximum volume capacity expected in any one month, not intended to be sustained regularly)					
Average Monthly Print Volume (AMPV)		10,000 to 60,000 pages per month					
Paper Flexibility/Weights		Standard Paper Capacity: 3,500 sheets: (Tray 1 and 2: 540 sheets, Tray 3: 890 sheets, Tray 4: 1280 sheets, Tray 5 (MSI/Bypass): 250 sheets) Maximum Paper Capacity: 7,500 sheets (Tray 1 and 2: 540 sheets, Tray 3: 890 sheets, Tray 4: 1280 sheets, Tray 5 (MSI/Bypass): 250 sheets, Two-tray Oversized High Capacity Feeder: 4,000 sheets) Sizes: Tray 1: 100 x 148 mm to 330.2 x 488 mm; Tray 2: 100 x 148 mm to 330.2 x 488 mm; Tray 3: 184 x 267 mm to A4; Tray 4: 184 x 267 mm to A4					
Image Quality	Print Technology	Setting a new, higher benchmark for light-production image quality with LED technology, the printer delivers 2400 x 2400 dpi resolution using advanced HD LED and HD EA Toner for exceptional clarity and vibrant, rich colours					
	Line Screens	It supports 150/200/300/600 dot screens, a 200-line screen, stochastic screening and enhanced text and graphics					
	Registration	<ul style="list-style-type: none">Cutting-edge registration technology for tight controlSimple Image Quality Adjustment (SIQA) for de-skew, registration and density uniformity (available on all configurations)+/- 0.5 mm; variation may occur based on paper size, tray, etc.					
Print Features		<ul style="list-style-type: none">Print, copy, scan and fax (optional), including scan to PC, USB or email, and mobile printingThe expansive media range allows you to print everything from postcards to posters, on both coated and uncoated stock, up to 400 gsmThe Xerox Extensible Interface Platform® (EIP) enables connectivity with third-party software solutionsInline finishing options provide a professional polish, including banner printing, stapling, hole punching, folding, booklet stitching, creasing and three-knife trimming – for booklets, stitched presentations, reports and newslettersStay secure with integrated security features such as Internet Protocol (IP) filtering, image overwrite, secure print, encrypted scan to email, authentication and IPv6 support <ul style="list-style-type: none">1,300 mm XLS or Banner sheet size (Tray 5) supporting up to 220 gsm660 mm XLS or Banner sheets in Tray 5 with OHCF up to 220 gsmUp to 400 gsm media weight (Tray 5 and Two-tray OHCF only), with auto-duplex printing up to 350 gsm (Bypass Tray and OHCF)Xerox® replaceable units for toners, drums, fuser, charge corotron, waste bottles, staplesCustom Paper Setup and Paper CatalogueLoad-while-run toner and paper capabilityRemote UI and Smart Proximity SensorOptional Features: Common Access Card Enablement Kit, Accounting Options, PostScript with Integrated Colour Server					
Servers		Required <ul style="list-style-type: none">Integrated Colour Server for the Xerox® PrimeLink® C9200 Printer Series		Optional <ul style="list-style-type: none">Xerox® EX-i C9200 Series Print Server Powered by Fiery® (FS600 Platform)Xerox® EX C9200 Series Print Server Powered by Fiery® (FS600 Platform)			
Integrated Scanner		<ul style="list-style-type: none">Single-pass Automatic Duplex Document FeederColour or black-and-white scannerThumbnail preview, XPS, TIFF, JPEG, Scan to searchable text PDF (Optional), PDF/A250-sheet capacity		<ul style="list-style-type: none">Up to 270 ipm (colour, up to 200 gsm)Up to 270 ipm (black and white, up to 200 gsm)Originals up to A3 in weights from 38 gsm to 200 gsmAuto Document Feeder and platen glass used with SIQA (Tray to Paper registration)			
Optional Feeding		Optional High Capacity Feeder (HCF): 2,000 sheets; 184.2 x 266.7 mm, 279.4 x 215.9 mm / B5, A4; 60 to 220 gsm (uncoated and coated) Optional Oversized High Capacity Feeder (OHCF): One-Tray OHCF: Capacity: 2,000 sheets + storage cabinet, Tray 6 – 100 x 148 mm to 330 x 488 mm (60 to 350 gsm) Two-Tray OHCF: Capacity: 4,000 sheets Tray 6 and 7 – 100 x 148 mm to 330 x 488 mm (60 to 400 gsm) OHCF Tray 5/bypass tray: Maximum banner sheet (XLS) is 330 x 660 mm/220 gsm					
Optional Finishing		Business Ready Finisher 2.0: Offsetting Top Tray: 500 sheets A4, unstapled. Stacking Stapling Tray: 3,000 sheets unstapled or 100 sets (dual or 4-position staple) 216 x 356 mm, A3, or 200 sets (single-position staple) A4. Sizes: Stacking: A6 to SRA3, Stapling: B5 to A3. Other; A5 output to top tray; punch and offset. Paper weights: Top Tray: 60 to 350 gsm (coated and uncoated). Stacker Tray: 60 to 256 gsm (coated and uncoated). Business Ready Finisher Booklet Maker Finisher 2.0: Offsetting Top Tray: 500 sheets A4 unstapled. Stacking Stapling Tray: 1,500 sheets unstapled or 200 sets (single position stapling or dual or 4-position staple) or 100 stapled sets of A3 / SRA3. 216 x 356 mm, A3 or 200 sets (single-position staple) A4. Sizes: Stacking: A6 to SRA3. Stapling: B5 to A3. Other; A5 output to top tray; punch and offset. Paper weights: Top Tray: 60 to 350 gsm (coated and uncoated), Stacker Tray: 60 to 350 gsm (coated and uncoated). Booklet Maker: 256 to 300 gsm cover (uncoated, 106 to 220 gsm (coated)). Booklet Maker/Saddle-stitch 2 to 16 sheets (7 sheets at 106 to 176 gsm coated or 5 sheets at 177 to 220 gsm coated). Xerox® Production Ready Finisher (requires Interface Decurler Module): Booklet Size: 100 sheets (90 gsm) uncoated, 35 sheets (90 gsm) coated. Paper Size: 182 x 146 mm to 297 x 432 mm. Maximum Weight: 350 gsm. Options: Punch, Inserter and C/Z Folder. Trays: Two output trays, 500-sheet top tray, 3,000-sheet stack tray of 148 x 146 mm to 330 x 488 mm. Xerox® Production Ready Booklet Maker Finisher (requires Interface Decurler Module): Booklet Size: 182 x 182 mm to 330 x 488 mm up to 256 gsm. Trays: 500-sheet top tray, 2,000-sheet stack tray, saddle-stitch booklet tray (up to 120 pages, 30 sheets/90 gsm uncoated, 15 sheets/106 gsm coated). Offset Catch Tray: 500 sheet stacking. Xerox® SquareFold® Trimmer Module: Face Trim: 120 pages (30 sheets). Compatibility: Xerox® Production Ready Finisher, Xerox® Production Ready Booklet Maker Finisher, and Xerox® Crease and Two-Sided Trimmer. Xerox® C/Z Folder: Sheet Size: A4. Half Z-fold Sheet Size: Larger stocks reducing to A4. Weight Range: 64 to 90 gsm. Compatibility: Xerox® Production Ready Booklet Maker Finisher. Xerox® Inserter: Capacity: 250 sheets. Capabilities: Trimming, punching, folding, stapling and stacking. Paper Size: 182 x 148 mm to 330 x 488 mm. Maximum Weight: 350 gsm. Compatibility: Xerox® Production Ready Finisher. Xerox® Crease Two-sided Trimmer: Trim Range: 6 mm to 25 mm. Paper Size: 194 x 210 mm to 330 x 488 mm. Maximum Weight: 350 gsm. Compatibility: Xerox® Production Ready Booklet Maker Finisher. Buffering Unit: Up to five customisable mountain or valley creases per sheet. For more optional finishing, refer to the Product Explorer at explore.xeroxproducts.com/Product.					
Xerox App Gallery		Visit xerox.com/AppGallery to learn how you can expand the capabilities of the Xerox® PrimeLink® C9265/C9275/C9281 Printer Series and work in new ways with dedicated apps for business, education, healthcare and more.					

Configurations may vary by geographical location.

For more information, visit www.xerox.co.uk

